

# Crime and ASB Performance Overview

March 2018

*Sources:*

*Except where noted, all data from Metropolitan Police Service (MPS) Website and MPS AWARE System*

[haringey.gov.uk](http://haringey.gov.uk)

# Performance Overview



▪ Mayor's Police and Crime Plan (2017-2021) has outlined key priorities for Haringey, which are due for review shortly:

## Mandatory High Harm Crimes:

- Sexual Violence
- Domestic Abuse
- Child Sexual Exploitation
- Weapon-Based Crime
- Hate Crime

## Mandatory Volume Crime:

- Anti-Social Behaviour

## Local Priorities:

- Robbery
- Non-Domestic Violence with Injury (VWI)

▪ Key focus on Violence, Vulnerability and Exploitation, whilst balancing response to volume crime

▪ Ranking tables show Haringey in the London context (No.1 indicates best performing borough)

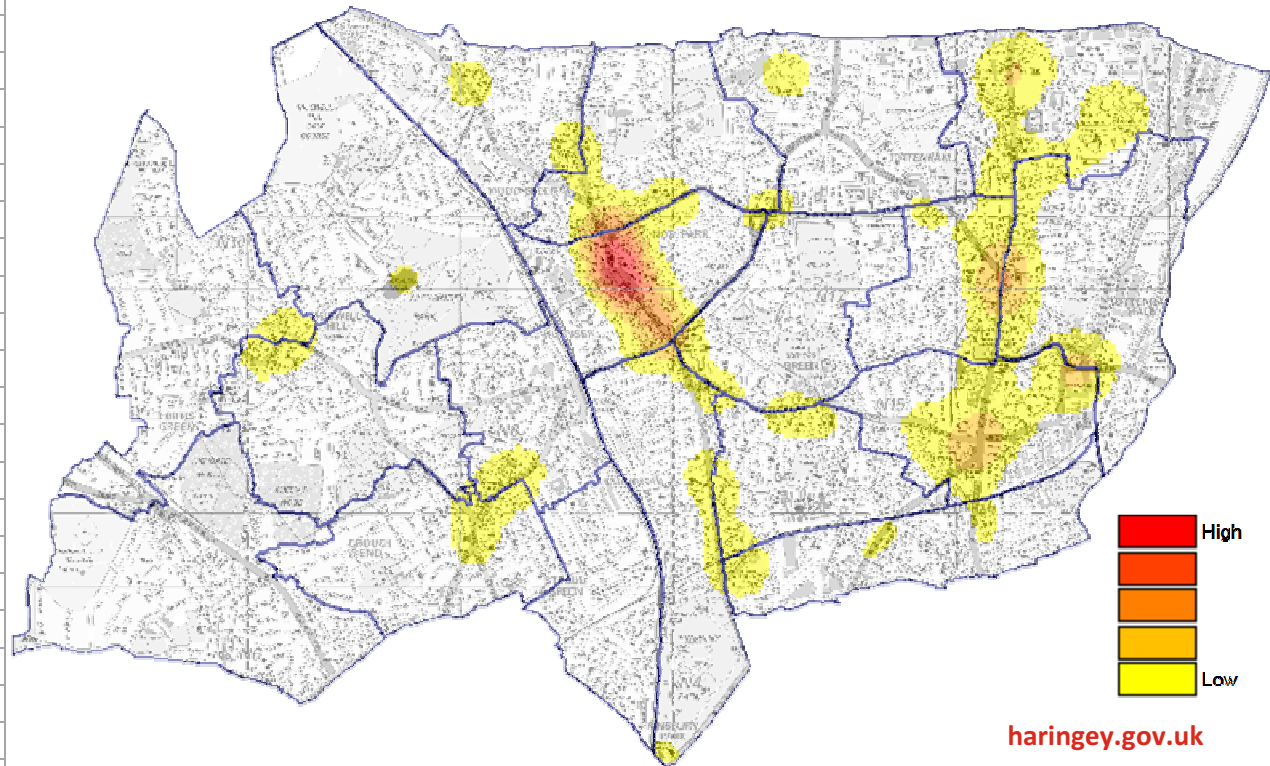
# Total Notifiable Offences



Borough	TNO	London Rank	Volume
Lambeth	-2%	1	34779
Lewisham	0%	2	25011
Croydon	1%	3	30444
Ealing	1%	4	28222
Harrow	2%	5	13892
Wandsworth	2%	6	25254
Merton	4%	7	13734
Hammersmith and Fulham	4%	8	21692
Tower Hamlets	4%	9	31922
Southwark	4%	10	34000
Barnet	5%	11	26914
Barking and Dagenham	5%	12	18631
Kensington and Chelsea	6%	13	21425
Waltham Forest	6%	14	22754
<b>Haringey</b>	<b>7%</b>	<b>15</b>	<b>30236</b>
Brent	7%	16	29689
Enfield	8%	17	25119
Greenwich	8%	18	25397
Havering	8%	19	18900
Hounslow	8%	20	24827
Hillingdon	9%	21	24716
Hackney	9%	22	31720
Sutton	9%	23	12024
Bromley	10%	24	22740
Bexley	10%	25	14778
Newham	10%	26	34422
Kingston upon Thames	10%	27	11444
Westminster	14%	28	57036
Richmond upon Thames	15%	29	13179
Islington	15%	30	32108
Redbridge	16%	31	23393
Camden	25%	32	37849
<b>London Total</b>	<b>8%</b>		<b>818251</b>

Overall recorded crime in Haringey has increased by 7% in the 12 months to February 2018, compared to a London wide average increase of 8%.

The main hotspots are located around Wood Green High Road and around the A10 corridor, from Bruce Grove to Seven Sisters.



# Hate Crime



- There has been a London wide trend of increased reports of hate crime over the past year.
- Haringey has experienced an increase of +3.5% in hate crime reports in the 12 months to December 2017. London as a whole has seen an increase of +3%

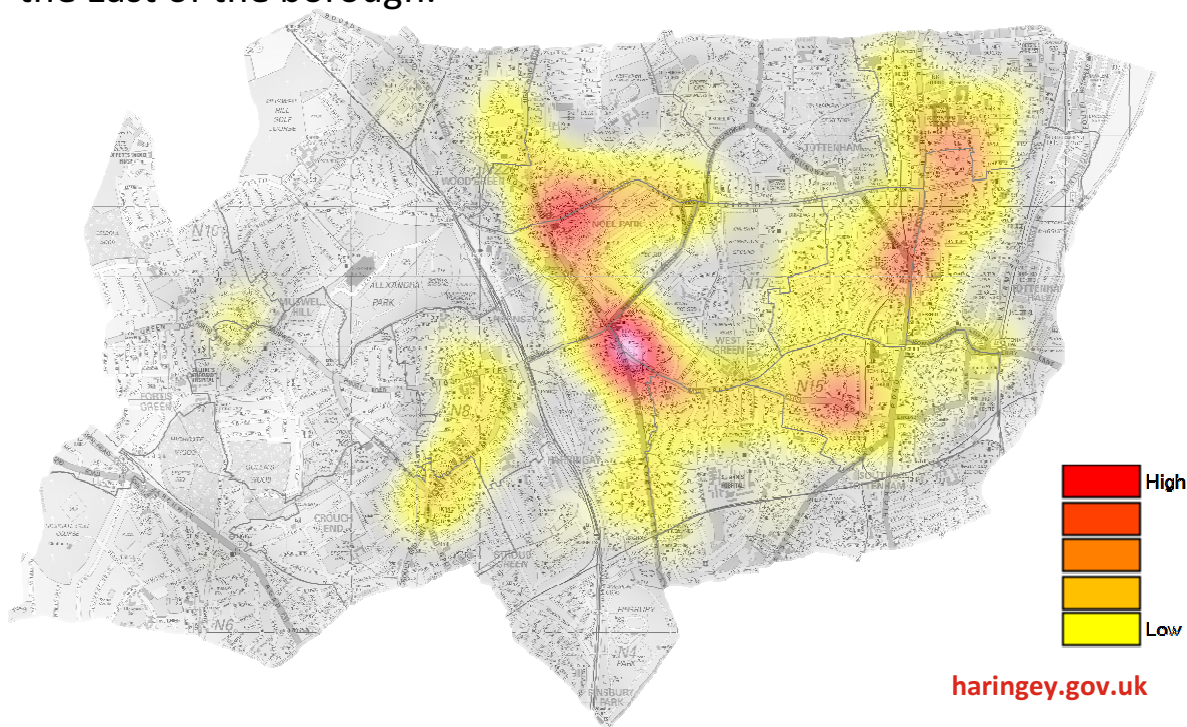
	Haringey January 2016 – December 2016	Haringey January 2017 – December 2017	Haringey Change %	London Change %
<b>Racist &amp; Religious Hate Crime</b>	681	675	-1%	+1%
<b>Homophobic Hate Crime</b>	65	94	+45%	+4%
<b>Anti-Semitic Hate Crime</b>	32	37	+16%	0%
<b>Islamophobic Hate Crime</b>	50	52	+4%	+36%
<b>Disability Hate Crime</b>	23	14	-40%	-44%

# Domestic Abuse Violence with Injury



Borough	Domestic Abuse VWI	London Rank	Volume
Waltham Forest	-12%	1	767
Kingston upon Thames	-9%	2	307
Hillingdon	-9%	3	722
Havering	-8%	4	674
Hackney	-7%	5	796
Lewisham	-4%	6	1018
Tower Hamlets	-4%	7	849
Merton	-3%	8	467
Enfield	-3%	9	898
Greenwich	-3%	10	964
Bromley	0%	11	802
Barking and Dagenham	0%	12	788
Newham	1%	13	1018
Ealing	1%	14	941
Harrow	2%	15	505
Redbridge	2%	16	670
Lambeth	2%	17	968
Islington	2%	18	700
Hounslow	3%	19	877
Sutton	4%	20	485
Bexley	4%	21	577
<b>Haringey</b>	<b>6%</b>	<b>22</b>	<b>1015</b>
Southwark	6%	23	1046
Brent	7%	24	984
Croydon	7%	25	1319
Westminster	8%	26	595
Hammersmith and Fulham	9%	27	528
Barnet	11%	28	816
Wandsworth	12%	29	722
Camden	13%	30	548
Kensington and Chelsea	20%	31	356
Richmond upon Thames	22%	32	366
<b>London Total</b>	<b>2%</b>		<b>24088</b>

- Domestic Abuse VWI in Haringey has increased by 6% in the 12 months to February 2018, compared to a London wide average increase of +1.8%.
- Offending takes place primarily in residential locations, with hotspots in Turnpike Lane, Wood Green and Bruce Grove.
- Over two-thirds of all reported Domestic Abuse VWI occurs to the East of the borough.



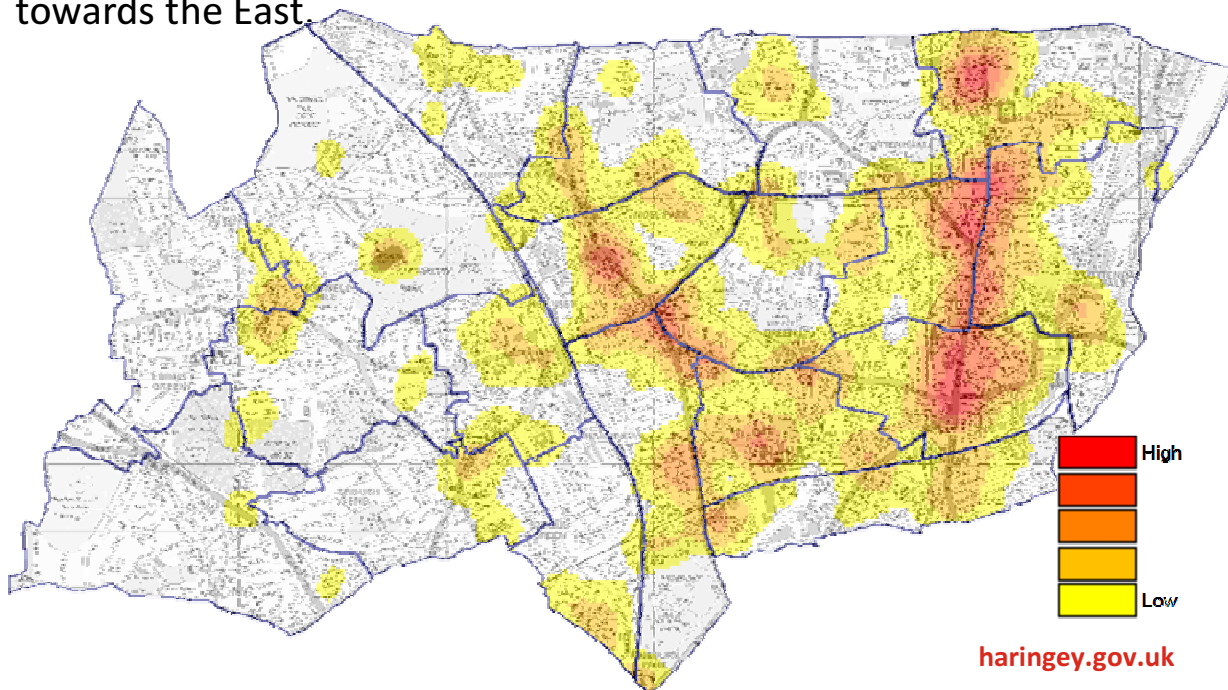


# Sexual Offences



Borough	Sexual Offences	London Rank	Volume
Lewisham	-1%	1	695
Redbridge	-1%	2	545
Hammersmith and Fulham	-1%	3	434
Tower Hamlets	0%	4	739
Hounslow	1%	5	553
<b>Haringey</b>	<b>1%</b>	<b>6</b>	<b>642</b>
Kensington and Chelsea	2%	7	477
Barking and Dagenham	3%	8	354
Lambeth	4%	9	903
Croydon	5%	10	880
Bexley	6%	11	413
Harrow	7%	12	330
Bromley	8%	13	514
Ealing	10%	14	607
Westminster	10%	15	1024
Wandsworth	11%	16	727
Hackney	12%	17	798
Enfield	13%	18	618
Southwark	14%	19	848
Newham	15%	20	863
Merton	15%	21	357
Barnet	15%	22	624
Greenwich	16%	23	654
Waltham Forest	19%	24	600
Camden	19%	25	739
Brent	19%	26	690
Richmond upon Thames	21%	27	348
Hillingdon	21%	28	562
Sutton	21%	29	379
Kingston upon Thames	22%	30	320
Islington	27%	31	665
Havering	29%	32	465
<b>London Total</b>	<b>12%</b>		<b>19367</b>

- Overall sexual offences in Haringey have increased by 1% in the 12 months to Feb 18, compared to a London wide average increase of 12%.
- 42% of sexual offences in Haringey are categorised in the most serious category of rape, which is similar to the London wide picture
- Offences are spread across entire borough, with more clustering towards the East.



# Personal Robbery

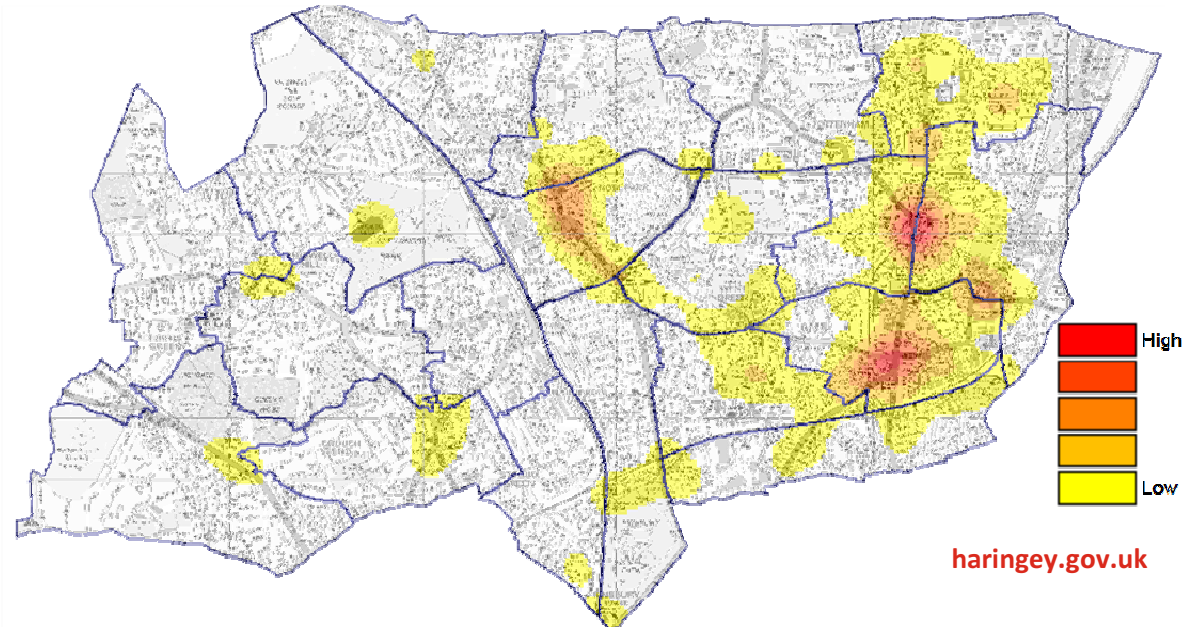


Borough	Personal Robbery	London Rank	Volume
Harrow	-18%	1	315
Croydon	2%	2	1183
Lewisham	14%	3	999
Hounslow	18%	4	481
Tower Hamlets	20%	5	1511
Enfield	21%	6	999
Hillingdon	22%	7	524
Lambeth	23%	8	1509
Merton	24%	9	353
Wandsworth	24%	10	763
Ealing	25%	11	847
Westminster	29%	12	2398
Brent	30%	13	1219
Kensington and Chelsea	30%	14	682
Greenwich	30%	15	636
Bexley	32%	16	288
Southwark	35%	17	1800
Waltham Forest	36%	18	827
Barnet	38%	19	645
Newham	38%	20	2071
Hackney	40%	21	1467
Hammersmith and Fulham	40%	22	563
<b>Haringey</b>	<b>41%</b>	23	1836
Redbridge	48%	24	890
Kingston upon Thames	52%	25	181
Barking and Dagenham	59%	26	877
Sutton	61%	27	268
Bromley	71%	28	628
Islington	90%	29	1814
Havering	96%	30	626
Camden	122%	31	2025
Richmond upon Thames	123%	32	232
<b>London Total</b>	<b>41%</b>		31457

Personal robbery has increased significantly in Haringey, by 41%, which is more than an additional 500 offences per year. London wide offending has also worsened, experiencing an increase of 41%.

In particular, robbery of mobile phones has seen an increase of 51% in Haringey (653 in 12 months), which is significantly above the London increase in this same category of 39%.

Moped enabled robbery volumes have begun to reduce in recent months. The highest volumes have taken place in Islington, Camden and Hackney.



# Knife Injury Victims Aged Under 25



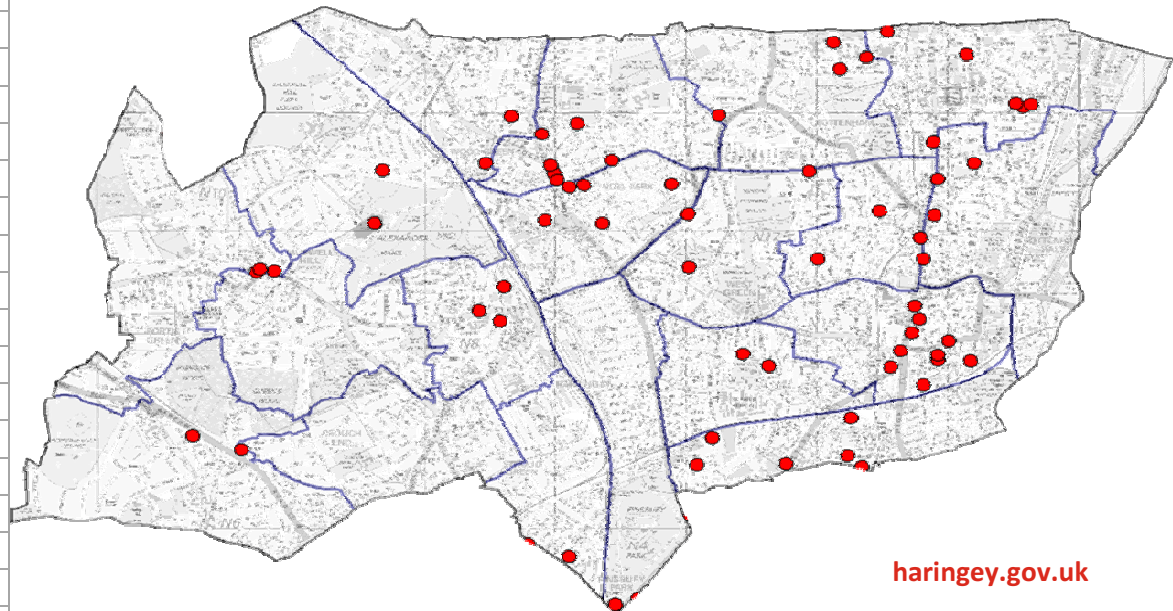
Borough	Knife Injury Victims Aged Under 24 (Non-Domestic)	London Rank	Volume
Ealing	-14%	1	79
Merton	-14%	2	28
Hounslow	-9%	3	58
Bexley	-8%	4	28
<b>Haringey</b>	<b>-8%</b>	<b>5</b>	<b>83</b>
Barking and Dagenham	-1%	6	42
Kensington and Chelsea	2%	7	98
Lewisham	4%	8	54
Wandsworth	6%	9	127
Newham	8%	10	102
Tower Hamlets	9%	11	102
Croydon	11%	12	47
Harrow	13%	13	62
Barnet	14%	14	51
Bromley	16%	15	69
Redbridge	17%	16	78
Greenwich	17%	17	91
Westminster	18%	18	144
Lambeth	18%	19	106
Hackney	19%	20	93
Islington	20%	21	115
Hammersmith and Fulham	22%	22	45
Brent	28%	23	122
Havering	31%	24	45
Richmond upon Thames	34%	25	20
Southwark	35%	26	159
Kingston upon Thames	35%	27	21
Waltham Forest	39%	28	85
Hillingdon	48%	29	69
Enfield	50%	30	95
Sutton	67%	31	30
Camden	70%	32	92
<b>London Total</b>	<b>8%</b>		<b>2440</b>

■ Haringey has experienced a reduction in young victims of knife injuries, reducing by **-8%**. During this period, London overall has increased by **8%**.

■ **However, serious incidents still occur, which often lead to serious and life-changing injuries.**

■ Key locations are Wood Green High Street, Turnpike Lane and Bruce Grove / Lansdowne Road

■ Hotspots have continued to shift, following targeted partnership work in long standing high volume locations.





# Lethal Barrelled Firearm Discharges

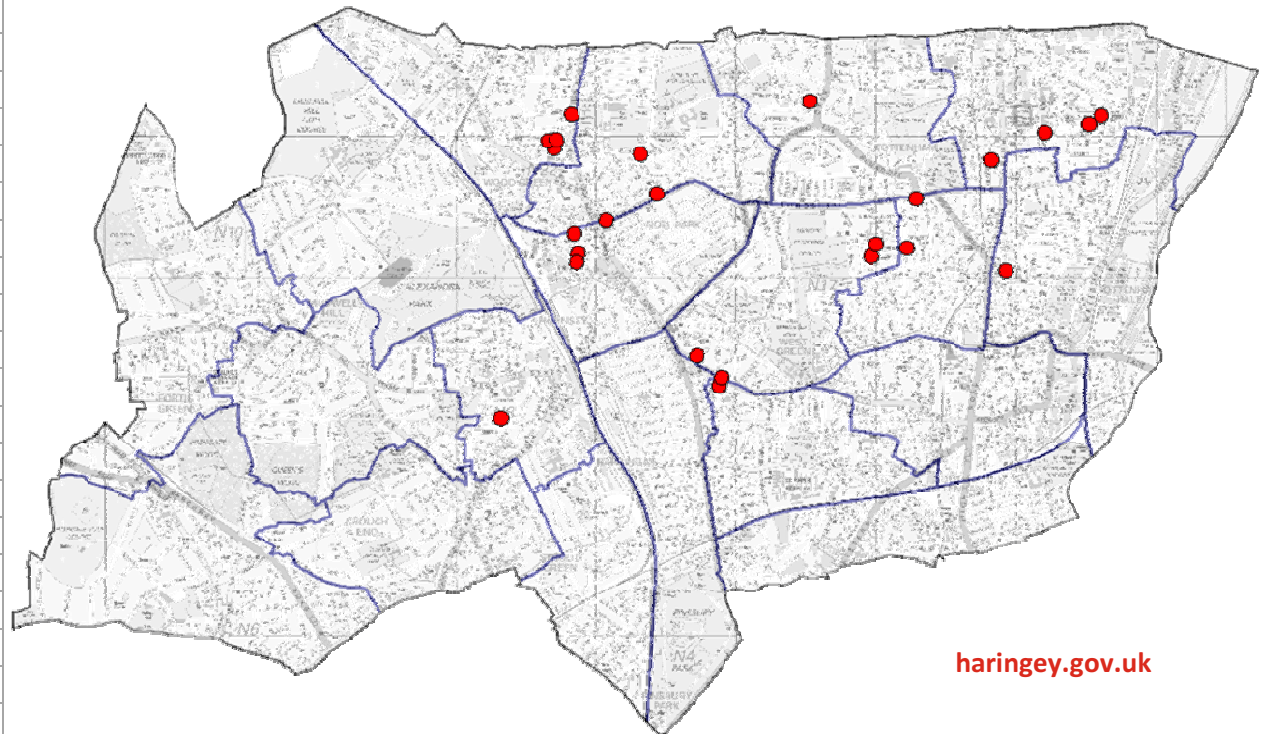


Borough	Lethal Barrelled Firearm Discharges	London Rank	Volume
Barnet	-89%	1	2
Wandsworth	-80%	2	2
Tower Hamlets	-62%	3	5
Bexley	-40%	4	3
Waltham Forest	-35%	5	15
Kensington and Chelsea	-33%	6	4
Lewisham	-27%	7	8
Ealing	-25%	8	3
Greenwich	-18%	9	9
Lambeth	-17%	10	24
Hackney	-14%	11	18
Redbridge	0%	12	10
Westminster	0%	13	8
Enfield	6%	14	17
Brent	10%	15	23
Islington	10%	16	11
Newham	11%	17	41
Southwark	27%	18	14
Harrow	33%	19	4
Bromley	33%	20	4
Sutton	33%	21	4
Richmond upon Thames	50%	22	3
Barking and Dagenham	80%	23	9
Hounslow	100%	24	5
Hammersmith and Fulham	100%	25	8
Kingston upon Thames	100%	26	6
Croydon	133%	27	2
Camden	133%	28	14
Merton	150%	29	14
<b>Haringey</b>	<b>160%</b>	30	44
Hillingdon	175%	31	11
Havering	600%	32	7
<b>London Total</b>	<b>12%</b>		352

■ Lethal barrelled firearm discharges in Haringey have increased significantly, from 17 up to 44, year on year, a 160% increase. London has increased by 12% over this same period.

■ Haringey accounts for **1 in 8** of all lethal barrelled firearm discharges in London.

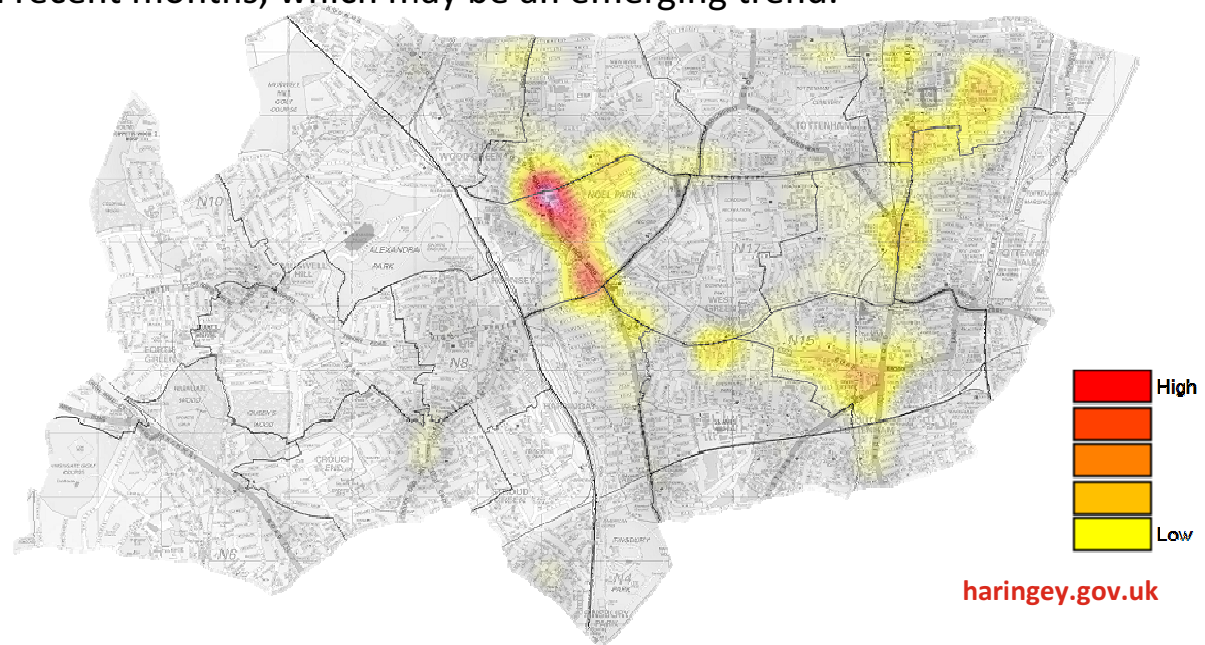
■ Firearm related incidents mostly occur to the East of the borough, and show some correlation with known gang linked areas. Offences also demonstrate some geographical clustering.



# Non-Domestic Abuse Violence With Injury **Haringey** LONDON

Borough	Non-Domestic Abuse VWI	London Rank	Volume
Hammersmith and Fulham	-7%	1	1192
Croydon	-5%	2	2103
Islington	-4%	3	1653
Barking and Dagenham	-4%	4	1290
Hillingdon	-4%	5	1643
Newham	-3%	6	2244
Richmond upon Thames	-3%	7	609
Tower Hamlets	-3%	8	1974
Ealing	-3%	9	1952
Lambeth	-2%	10	2710
Merton	-1%	11	889
Southwark	0%	12	2214
Wandsworth	0%	13	1506
Kingston upon Thames	0%	14	789
Camden	1%	15	1901
Waltham Forest	1%	16	1554
Greenwich	2%	17	1809
Barnet	3%	18	1462
Redbridge	3%	19	1403
Kensington and Chelsea	3%	20	1007
Hounslow	4%	21	1893
Brent	4%	22	1570
Havering	5%	23	2225
Harrow	5%	24	1291
Lewisham	6%	25	886
Westminster	7%	26	2944
<b>Haringey</b>	<b>8%</b>	<b>27</b>	<b>1993</b>
Hackney	8%	28	2087
Bexley	11%	29	1034
Enfield	12%	30	1594
Sutton	16%	31	879
Bromley	20%	32	1475
<b>London Total</b>	<b>4%</b>		<b>51775</b>

- Non-domestic VWI offences have increased in Haringey by 8%, which is larger than the London-wide increase of 4%.
- A significant proportion of incidents occur in busy locations, such as shopping centres, transport hubs and key thoroughfares.
- Some incidents are also linked to retail/night time economy related issues, including when individuals have been refused entry to shops or bars/pubs and subsequently attacking staff/security.
- An small increase in violent incidents in park locations has been noted in recent months, which may be an emerging trend.



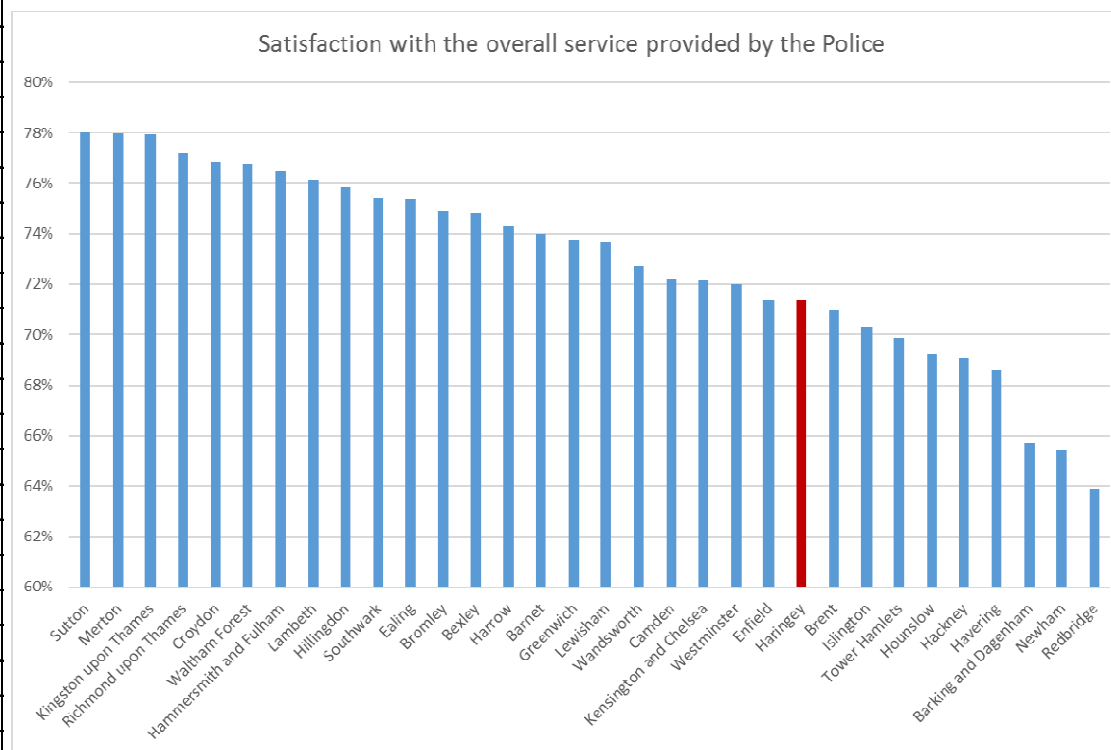
# Confidence and Satisfaction Levels

Nov 2017



Borough	Satisfaction with the overall service provided by the Police	Rank
Sutton	78%	1
Merton	78%	2
Kingston upon Thames	78%	3
Richmond upon Thames	77%	4
Croydon	77%	5
Waltham Forest	77%	6
Hammersmith and Fulham	76%	7
Lambeth	76%	8
Hillingdon	76%	9
Southwark	75%	10
Ealing	75%	11
Bromley	75%	12
Bexley	75%	13
Harrow	74%	14
Barnet	74%	15
Greenwich	74%	16
Lewisham	74%	17
Wandsworth	73%	18
Camden	72%	19
Kensington and Chelsea	72%	20
Westminster	72%	21
Enfield	71%	22
<b>Haringey</b>	<b>71%</b>	<b>23</b>
Brent	71%	24
Islington	70%	25
Tower Hamlets	70%	26
Hounslow	69%	27
Hackney	69%	28
Havering	69%	29
Barking and Dagenham	66%	30
Newham	65%	31
Redbridge	64%	32

■ Haringey is currently ranked 23<sup>rd</sup> out of 32 London boroughs for satisfaction with the overall service provided by the police, an improvement of 6 places compared to the previous reporting period



# Confidence and Satisfaction Levels

Nov 2017



- Haringey is currently ranked **23<sup>rd</sup>** for satisfaction with the overall service provided by the police, at 71%, compared with a London average of 73%.
- In particular, Haringey has improved **for overall satisfaction for the BAME community**, at 71%, up from 67% previously. This compares to 73% for the white community in Haringey.
- Haringey has improved to **7<sup>th</sup> highest** for ease of contact, at 91%. The London average is 88%.
- Haringey's ranking for satisfaction with police actions currently sits at 66%, below the average of 68%.
- Satisfaction with treatment ranks Haringey **22<sup>nd</sup> in London**, and satisfaction with follow up ranks the borough **26<sup>th</sup>**.



# Crime in Parks



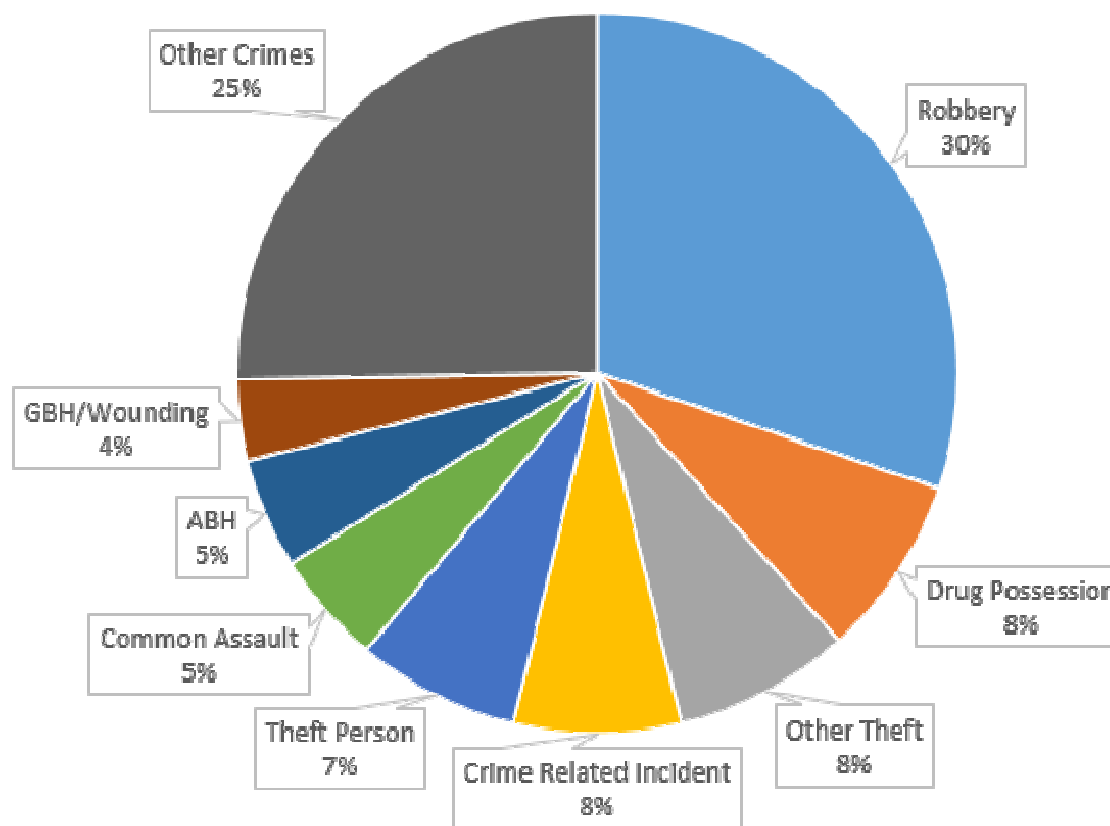
- 629 crimes have occurred in parks over the previous 12 months, representing a small 2% reduction as compared to the previous year.
- The below table summarises the highest crime volume parks in the borough.

Park	Total Crime 12 Months	% Of All Park Crime	Change Compared to Previous 12 Months
Finsbury Park N4	155	25%	42%
Lordship Recreation Ground N17	66	10%	78%
Alexandra Park	51	8%	21%
Markfield Park, N15	49	8%	26%
Down Lane Park N17	37	6%	-18%
Downhills Park N17	36	6%	-14%
Bruce Castle Park N17	34	5%	0%
Chestnuts Park N15	22	3%	-21%
Ducketts Common N4	22	3%	-70%
Tottenham Green	18	3%	1700%
All Other Parks	139	22%	-17%
<b>TOTAL</b>	<b>629</b>		<b>-2%</b>

# Crime in Parks

- The most common crime occurring in parks is robbery, usually involving mobile phones being stolen.
- Other common crime types including drug offences, theft and lower level violence, with some more serious violent offences occurring, but on an infrequent basis.

**Crime Types In Parks**



# Summary

- Several areas of positive performance
- Current MOPAC Police and Crime Plan priorities (Robbery and Non-DA VWI) continue to be high-volume and high risk
- Challenges include :
  - Responding to Robbery and Weapon Enabled Crime
  - Continuing to tackle vulnerability, including Domestic Abuse and Youth Violence
  - Improving Confidence and Satisfaction levels